



**Forming  
Cities of the Future**



معاً نسمو

Together We Evolve



**Driven by a Distinctive  
Vision of Reality**

## Contents

05 Sumou  
Real Estate

10 Vision, Message,  
Values

14 Governance  
and Compliance

16 Chairman of Board of  
Directors Statement

17 Chief Executive  
Officer Statement

19 The  
Methodology

23 The  
Services

26 Communities and  
Neighborhoods

30 Our  
Projects

66 Awards and  
Participations

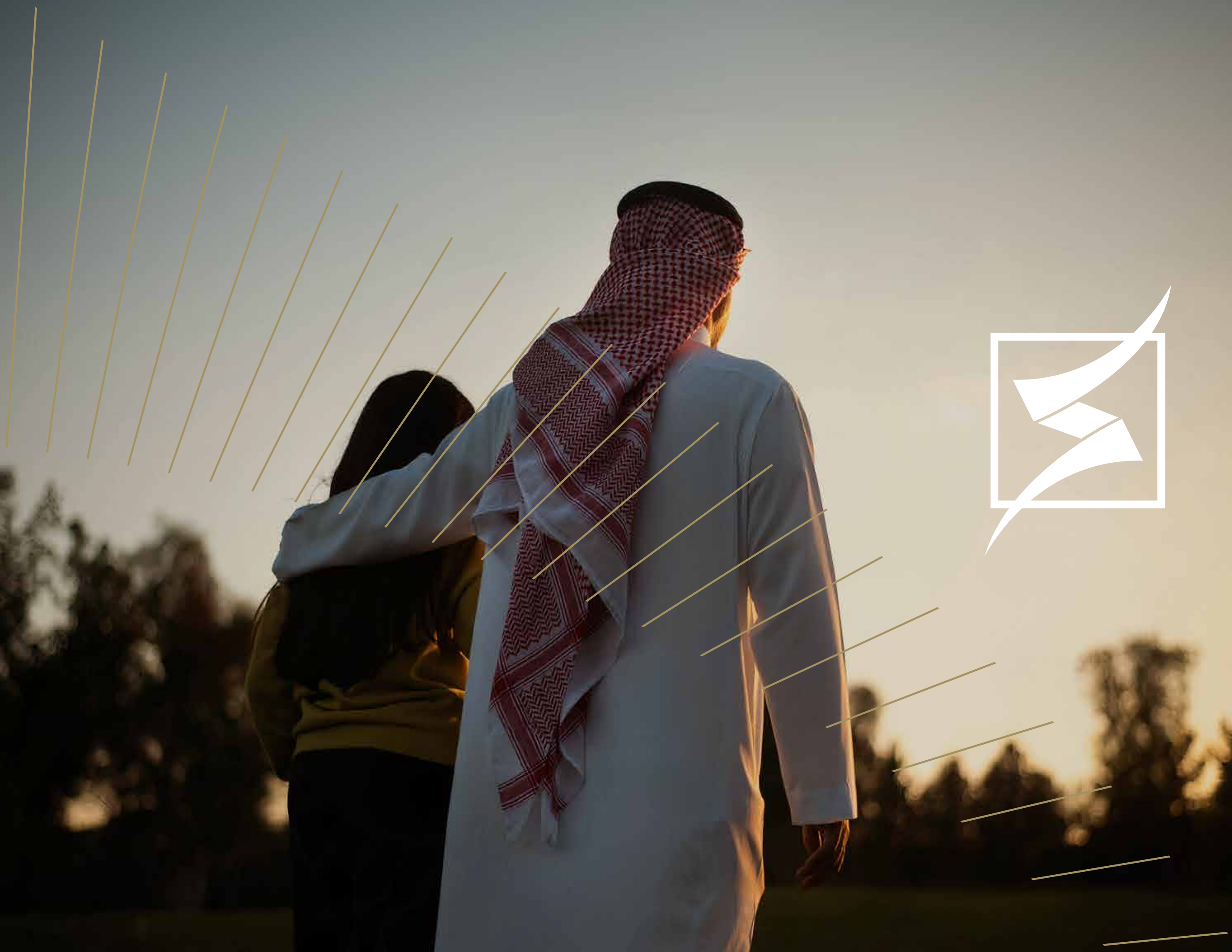
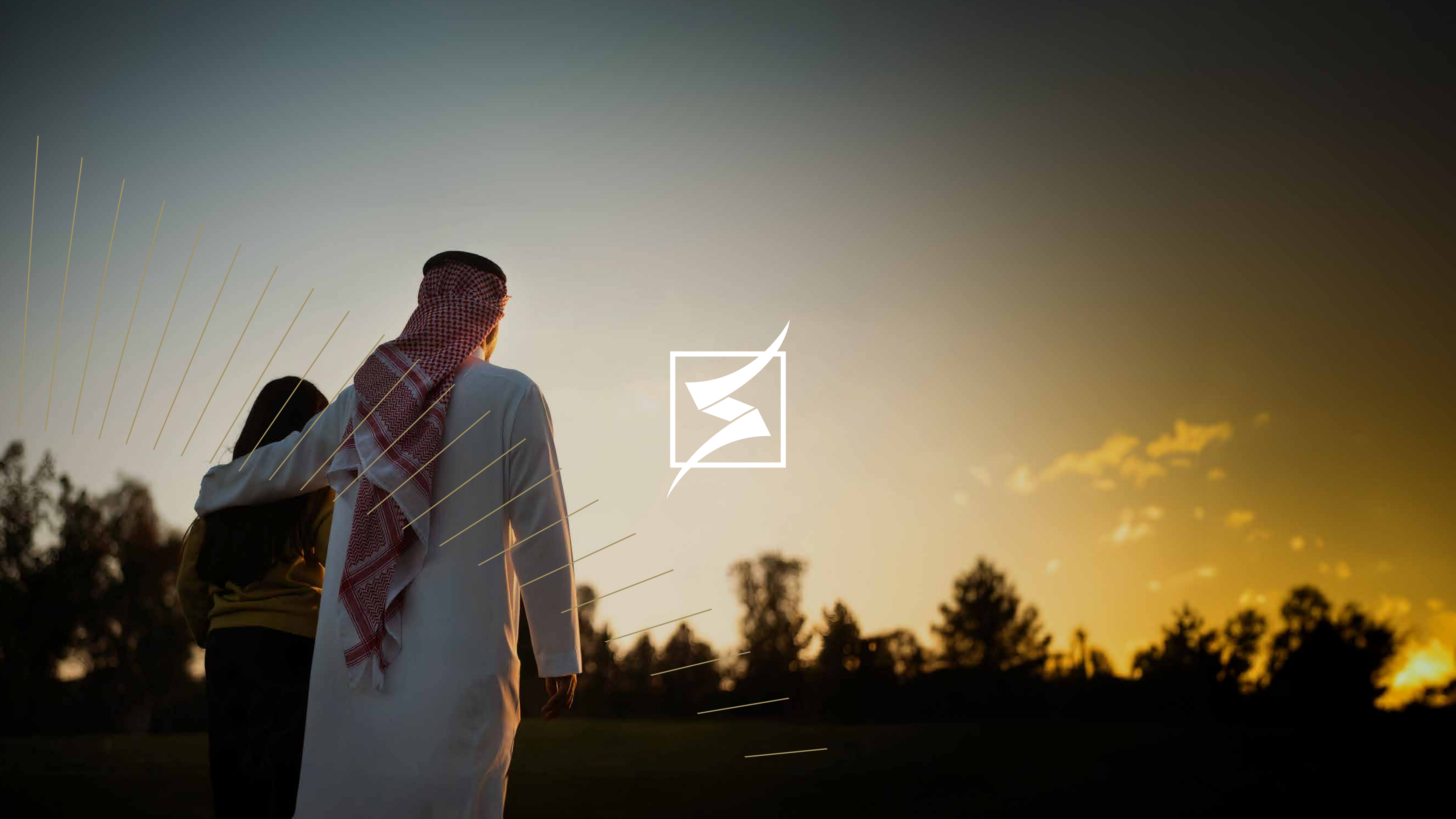
67 Success  
Partners



## Soaring Beyond Expectations

Sumou Real Estate is a trusted company blending quality and transparency in one innovative approach.

Sumou Real Estate is a leading Saudi Arabian company listed on the Saudi Stock Exchange. The company is committed to providing comprehensive real estate development services with a focus on creating sustainable neighborhoods and vibrant communities. Established in 2007, Sumou has consistently pursued excellence in enhancing the performance of the real estate sector. The company meets the diverse needs of society and is dedicated to shaping urban landscapes for future generations, in alignment with the objectives of the Kingdom's Vision 2030.





## One Entity Innovating the Future of Development

Sumou Real Estate is renowned for its distinctive and trustworthy qualities, which are evident in its ever-expanding roster of achievements. These accomplishments clearly establish the company as a leader in providing development management and real estate services. With its exceptional capabilities and professional expertise, Sumou consistently enhances its performance, ensuring the highest quality within a meticulously designed operational framework.



# Why Sumou?

## Enables Clients

To efficiently achieve their goals

## Specialized Expertise

Advanced and proven in real estate development.

## Comprehensive Capabilities

To deal with all area sizes and uses. And satisfies clients' and beneficiaries' needs.

## Adherent to Standards

Of international quality and enhances their capabilities.

## Fulfills Results

That are exceptional for its clients.

## Diversified Portfolio

Its continual growth, marked by an array of unique projects, reflects the clients' trust in and gravitation to Sumou."

## Reinforced Saudi Mark

thanks to extensive expertise.

## Unique Relation

And expertise. And an ability to manage real estate funds.

## Employs abilities

Leverages the skills and innovations of Saudi talents

## Ensures Development

Guarantees the advancement of the real estate concept

## Introduces Projects

that are innovative and expand choices for end-users and owners

## Facilitates Life

By developing essential infrastructure and superstructures

## Contributes to Communities

By enhancing their capacities and empowering younger generations.

## Develops

The latest technologies and innovations

## Guarantees Quality

Ensures excellence while adhering to established standards

## Great Returns

For clients, owners, and investor.





**Shaping the Space  
for the Human to Rise**

## Vision

For Sumou Real Estate to become the most distinguished entity in real estate development management.

## Message

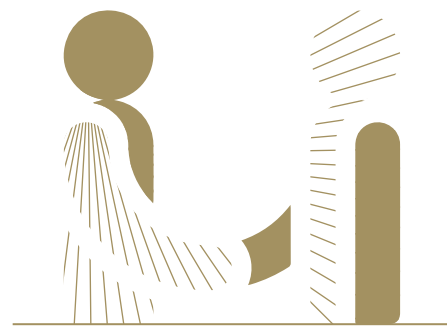
We seek to develop real estate projects characterized by innovation and high quality. Projects that contribute to the development of communities and achieve satisfactory returns for the clients.

## Values

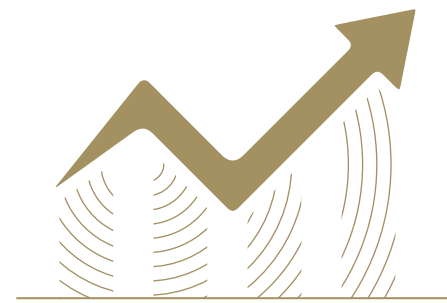
Leadership, quality, client satisfaction, transparency, trust, and innovation.



# Our Strategic Goals



Building relations and strategic alliances with clients and segments of the Saudi economy and integrating with them.



To fulfill investment returns for owners and investors, and the return level for contributors.



Adopt a precise development system according to a specific timeframe and financial framework.



To provide excellent real estate products to fulfil the demand in the real estate market.



Management and development of projects according to professional project management foundations and standards.

# Building Futuristic Communities



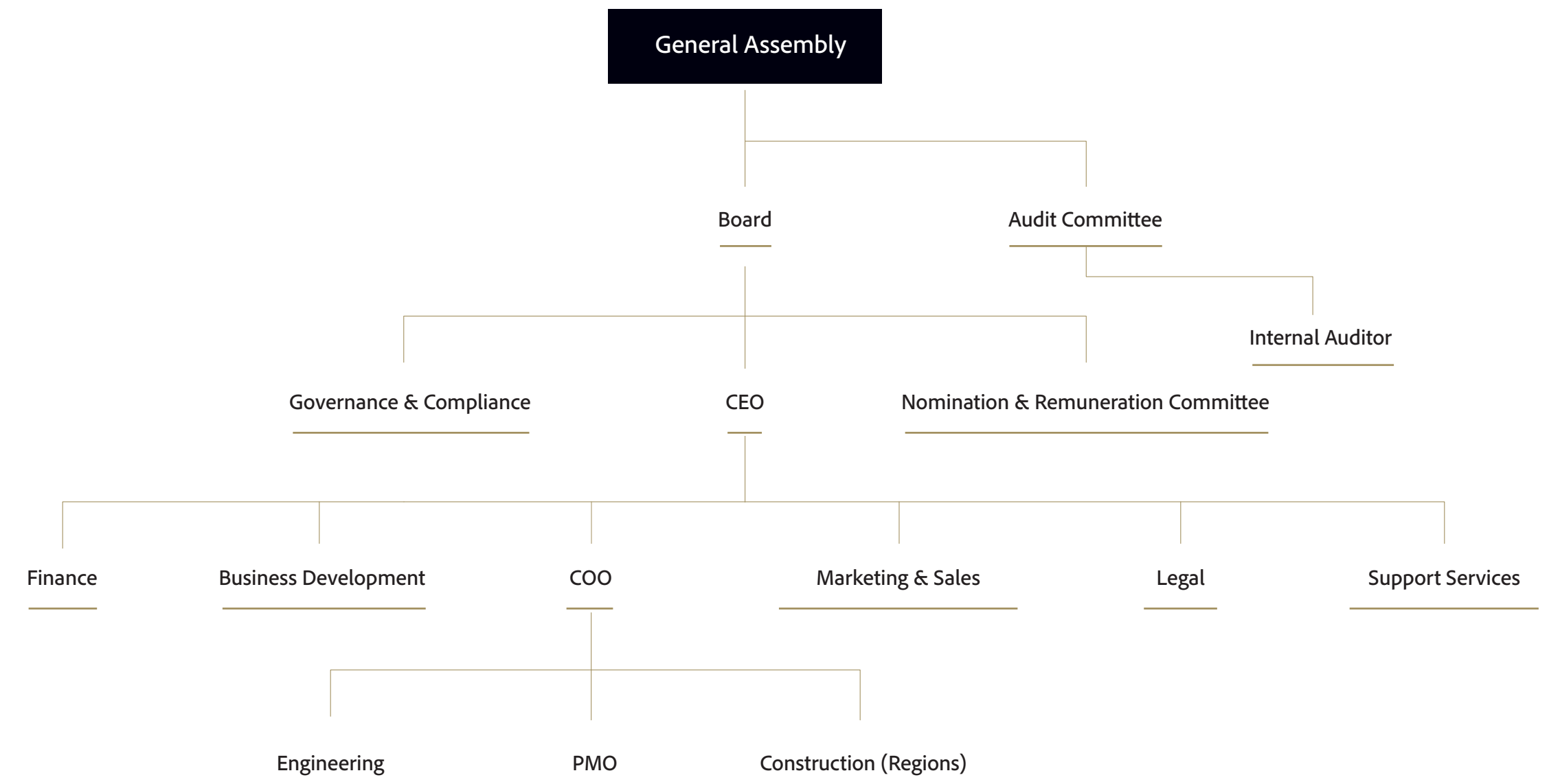


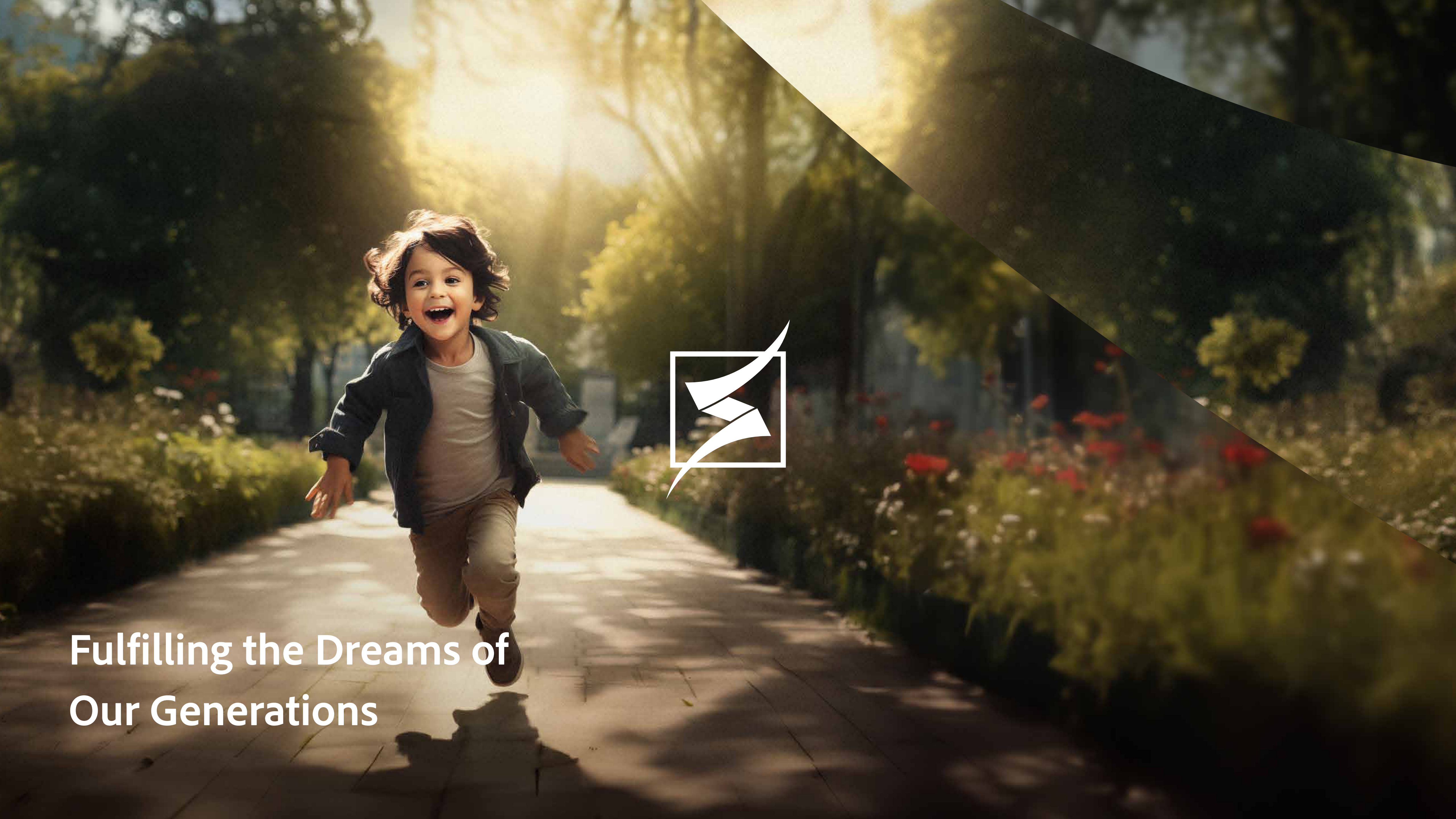
## Rising Up with the Kingdom's Vision

Sumou is actively engaged in reinforcing the Kingdom's Vision 2030 objectives by consistently elevating standards and enhancing quality across the real estate sector. Prioritizing Saudi families, the company delivers exceptional projects that provide a variety of residential options tailored to meet the needs of different market segments. These options not only cater to preferences but also aim to increase homeownership rates. Moreover, Sumou is dedicated to supplying residential units that are designed to meet the current and future needs and expectations of Saudi families.

## Governance and Compliance

The organizational structure of Sumou is stratified into several tiers including top management, middle management, and core management. Responsibilities are allocated across these levels; top management is tasked with strategic planning and making pivotal decisions, while middle management oversees the coordination and supervision of activities at the operational level.





**Fulfilling the Dreams of  
Our Generations**



**Ayed bin Farhan Al-Qahtani**  
Chairman of Board of Directors

## Chairman

Since its founding in 2007, Sumou has steadily advanced in real estate development, focusing on enhancing urban communities. With cities accounting for over 80% of global output with just 56% of the population, urbanization is set to rise; by 2050, nearly 70% of people will live in urban areas. Recognizing this, Sumou's strategy adheres to international standards to drive sustainable growth, productivity, and innovation.

Productivity and creativity flourish in urban settings that align with individual and societal goals. Sumou is committed to community well-being and contributing to the kingdom's economic growth by building

integrated communities. These communities support quality living and enable Saudi families to enjoy modern, fulfilling lifestyles.

Aligned with the Kingdom's Vision 2030, Sumou leverages cutting-edge technology and global best practices to deliver high-quality living for Saudi families. Our aim is to ensure sustainable living for all citizens and residents.





**Eng. Jarallah bin Mohammed Al Amrah**  
Chief Executive Officer

## CEO

In the quest to define success, perspectives may vary. However, our collective human experience often attests that ambition paves the way towards achieving success, with persistence serving as the means to navigate through challenges. At Sumou, we have charted a course from one ambitious milestone to another, achieving successive triumphs through a team that exemplifies excellence at every level—from the pinnacle of our corporate structure to its foundation. This, coupled with a lucid vision and steadfast resolve, has propelled us to establish a resilient yet adaptable organization, one that embodies a forward-looking and promising outlook.

Today, the tangible results of Sumou's adherence to its strategic trajectory are evident. We remain steadfast in our efforts to drive urban expansion, guided by the highest international benchmarks. Sumou has excelled

across various domains, from enhancing logistical capabilities and fostering creative acumen to delivering superior real estate products and surpassing the aspirations of the kingdom, its citizens, and investors. We undertake distinctive initiatives and innovative projects within the kingdom, drawing upon the expertise of local professionals renowned for their outstanding performance to achieve our ambitious goals.

Our partnerships with the governmental sector have laid a solid foundation for progress within our country. These collaborations have been instrumental in achieving synergy with Vision 2030, as we undertake significant urban developments spanning from the Eastern Province to Makkah, along with numerous other projects nationwide. We are committed to continuing this momentum, realizing even more achievements in the years to come.



Organized Operations to  
Consolidate Development Value

## The Methodology

Working within an integrated development system

Sumou Real Estate embraces a comprehensive procedural framework for initiating project development, which involves planning, designing, and executing both infrastructure and superstructure operations. The process starts by assessing the project's economic feasibility, followed by detailed planning and engineering studies, financial planning, and the formulation of marketing and sales strategies. Subsequently, a development plan is prepared. Design operations come next, which lead to seeking and obtaining approvals from the appropriate authorities. This progression leads to the implementation and management phases of the project. Once these phases reach their conclusion, the project is transitioned to experts who provide specialized solutions for its management, operation, and maintenance.

### Development

Project Development Studies

Planning and Engineering

Financial Planning

Market Strategy

### Implementation

Management and Operation Solutions

Completion and Handing Over

Project Management

Implementation and Follow-up



## Sumou's Style in Managing Projects

Sumou has honed a practical project management approach, demonstrating quality and competence. This approach emerged from structuring each project with an organizational framework and assembling a team of project management experts who implement state-of-the-art management systems. These measures are in place to mitigate risks and maximize investment opportunities for each project, adhering to the highest international standards. Moreover, a comprehensive local perspective guides the process, aiming to deliver real estate developments promptly and cost-effectively, without compromising on quality. These efforts contribute to the development of the locale and community, aligning with the Kingdom of Saudi Arabia's Vision 2030 objectives.

Pillars Supporting  
Our Integrated Methodology

Research and  
Development

Transparency

Governance

Professionalism

Excellence

Passion

Mastery

Creativity

Experience

Innovation

Leadership

Quality

Humanization

Sustainability

Commitment

Confidence

Planning

Keeping Pace



**International Quality and  
Sustainable Investment Feasibility  
for the Individual and Companies**



## The Services

01

### Development Management

Sumou Real Estate provides comprehensive development management services to its clients. Our offerings encompass the full spectrum of real estate development, including the preparation of initial feasibility studies and the generation of innovative development concepts. We excel in translating these concepts into tangible designs and overseeing their execution to ensure they align with our clients' objectives.

02

### Development and Implementation

Sumou Real Estate provides comprehensive development management services to its clients. Our offerings encompass the full spectrum of real estate development, including the preparation of initial feasibility studies and the generation of innovative development concepts. We excel in translating these concepts into tangible designs and overseeing their execution to ensure they align with our clients' objectives.



**Toward an Urban Expansion  
That Inspires Growth and  
Sustainable Creativity**





# سَمُو فِي أَرْقَام

# 15+

عَامًا مِنْ الْعَطَاءِ



# 60+

Million square meters of  
development areas

# 3.5M

Building areas

# 12K

Residential units

# 21

Infrastructure projects

# 06

Full-scale  
development projects

# 07

Superstructure projects

# 05

Provinces in Saudi Arabia

# 08

Cities in Saudi Arabia

# 03

Neighborhoods and communities



Neighborhoods  
and Communities



## مشروع بوابة مكة مكة المكرمة

### Makkah Gate Project

#### Makkah

In collaboration with International HOK Co., Sumou Real Estate has leveraged its extensive hands-on experience to study and design the structural scheme of the Makkah Gate Project, which spans an area exceeding 83 million square meters. The project introduces a transformative vision for suburban development by constructing the first multi-use residential suburb complete with integrated facilities and utilities. It is considered the principal western gateway to Makkah City and is situated along the Prince Mohammed bin Salman Makkah-Jeddah Highway. The project's most notable features include residential, commercial, administrative, educational, and healthcare zones, in addition to facilities, museums, and national parks. Envisioned as an ambitious and civilized façade, the Makkah Gate Project embodies a modern vision that celebrates the originality and distinguished heritage of the region.

Authority



Designer





## مشروع وادي عسلاء جدة

### Wadi Al Assla Project

#### Jeddah

In collaboration with International HOK Co., Sumou Real Estate has utilized its extensive hands-on experience to study and design the structural plan for a project that spans an area exceeding 130 million square meters. This project aims to introduce a new development concept in line with Vision 2030. It features the construction of a distinguished multi-use residential suburb, complete with comprehensive social, entertainment, and commercial amenities. Furthermore, the project stands as a beacon of civilized progress and prosperity, given its strategic location overlooking the Makkah-Jeddah Highway that connects King Abdulaziz International Airport (KAIA) with the holy city of Makkah.

Authority



Designer





## مشروع مركز التجارة والأعمال الدمام

### Trade & Business Center Project

#### Dammam

In collaboration with the Eastern Province Municipality, the internationally renowned design firm DPZ has been commissioned to conduct a study and design the structural scheme and building code for the Trade and Business Centre. This ambitious project is slated for construction over an area of 12 million square meters. Envisioned as the new vibrant heart of Dammam City, the site is strategically situated at the nexus of the city's main thoroughfares: King Fahd International Airport Road, the Riyadh-Dammam Highway, and Abu Hadriyah International Road.

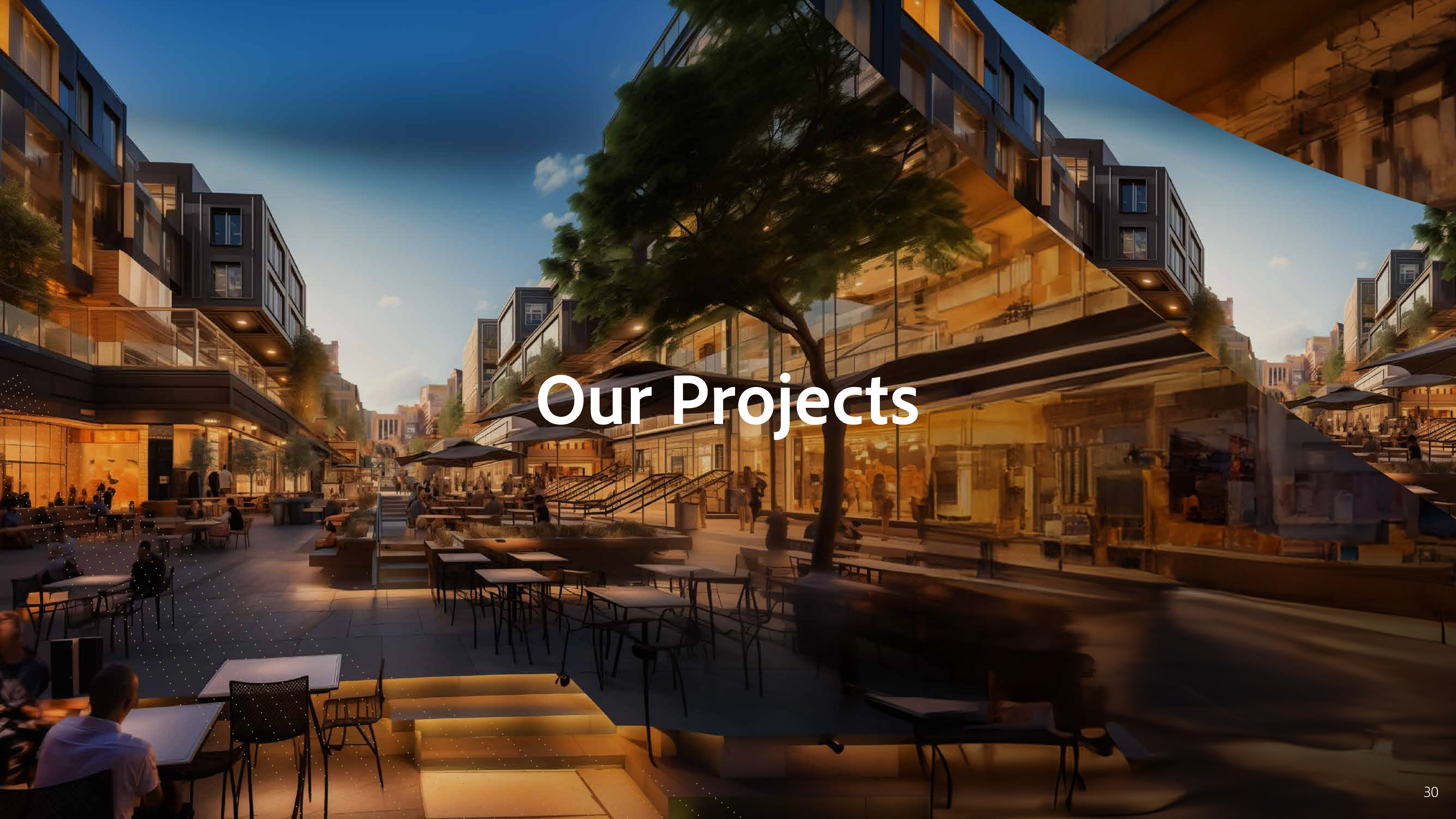
The project's structural scheme, along with the building code and a Floor Area Ratio of 7 allowing for unlimited building heights, has been issued. The Eastern Province Municipality has granted approval for these plans.

Authority



Designer

**DPZ**



# Our Projects

# أبراج سمو

## Sumou Towers

السمو والفخامة



### Location

Western Region  
Jeddah City

### Use

Residential –  
Commercial

### Development Functions

Technical and advisory services for  
development – Development  
management

### Size

33,399 m2

### Classification

Private

### Development type

Superstructure



سمو بارك

Sumou Park

الترفيه والفخامة



Location  
Central Region  
Riyadh City

Use  
Commercial –  
Sport

Development Functions  
Studies – Designs – Development  
management – Implementation –  
Marketing and renting

Size  
42,973 m2

Classification  
Investment

Development type  
Comprehensive Development





# صندوق ضاحية سمو

## Dahiat Sumou Fund

السكن والسكينة



Location

Western Region  
Makkah City

Use

Multi-purpose

Development Functions

Studies – Designs – Development  
management

Size

1,609,575 m2

Classification

Real Estate Fund

Development type

Comprehensive Development



# أجوان

Ajwaan

حياة الرفاهية



Location

Eastern Region  
Khobar City

Use

Residential –  
Commercial

Development Functions

Studies – Designs – Development  
management

Size

1,000,000 m2

Classification

Private

Development type

Comprehensive Development



# مروج جدة

Murooj Jeddah

—  
مستقبل جدة



Location

Western Region  
Jeddah City

Use

Multi-purpose

Development Functions

Studies – Designs – Development  
management – implementation –  
Marketing

Size

36,600,000 m2

Classification

Private

Development type

Comprehensive Development





دار سمو

Dar Sumou

تسمو الحياة

Location  
Western Region  
Jeddah City

Use  
Residential

Development Functions  
Studies – Designs – Development  
management - implementation -  
Marketing

Size  
104,766 m2

Classification  
Housing

Development type  
Superstructure





الأصيلة  
Alasila  
—  
صممت للنخبة

Location  
Central Region  
Riyadh City

Use  
Residential

Development Functions  
Studies – Designs – Development  
management - implementation –  
Marketing and sale

Size  
82,483 m2

Classification  
Housing

Development type  
Comprehensive Development



# السامية

## Al Samia

سمو الجوار



Location  
Western Region –  
Al-Madinah al-Munawwarah

Use  
Residential

Development Functions  
Studies – Designs – Development  
management - implementation –  
Marketing and sale

Size  
128,741 m2

Classification  
Housing

Development type  
Superstructure





أريم  
Areem  
رفاهية السكن

Location  
Western Region –  
Makkah

Use  
Residential

Development Functions  
Studies – Designs – Development  
management - implementation –  
Marketing

Size  
88,370 m2

Classification  
Housing

Development type  
Superstructure





الأعلى  
Al Aali  
عالية المكان

Location

Eastern Region – Dammam  
City

Use

Residential

Development Functions

Studies – Designs – Development  
management - implementation –  
Marketing and sale

Size

72,924 m2

Classification

Housing

Development type

Superstructure







# مجمع حطين السكني

Hitteen Complex

الحياة الراقية

Location

Eastern Region –  
Dammam City

Use

Residential

Development Functions

Development management

Size

59,584 m2

Classification

Private

Development type

Overall structure



# جود الظهران

## Jood AlDhahran

تأعم عصري



Location

Eastern Region – Dammam  
City

Use

Residential –  
Commercial

Development Functions

Development management

Size

268,901 m2

Classification

Private

Development type

Comprehensive Development



# أرين Areen

عين الخبر



Location

Eastern Region –  
Khobar City

Use

Residential

Development Functions

Studies – Designs - Development  
management

Size

90,041 m2

Classification

Private

Development type

Superstructure



# صندوق رياض التعمير العقاري الأول

Riyadh Altameer Real Estate Fund

قلب الرمال



Location

Central Region  
-Riyadh City

Use

Residential –  
Commercial

Development Functions

Studies – Designs - Development  
management – implementation

Size

3,000,000 m2

Classification

Real Estate Fund

Development type

Infrastructure





# العالية

Al Aalia

نماء الحياة المشتركة

Location

Central Region –  
Riyadh City

Use

Residential –  
Commercial

Development Functions

Development management

Size

3,012,533 m2

Classification

Private

Development type

Superstructure



# مشارف الخزامى

Masharef Alkhozama

عنوان الفخامة



Location

Central Region –  
Riyadh City

Use

Residential - Commercial  
– Investment

Development Functions

Studies – Designs – Marketing and sale

Size

2,989,642 m2

Classification

Private

Development type

Infrastructure



رواف

Rawaf

—  
أصالة وروحانية



Location  
Western Region –  
Makkah City

Use  
Residential -  
Commercial

Development Functions  
Studies – Designs - Development  
management – Marketing and sale

Size  
648,060 m2

Classification  
Private

Development type  
Infrastructure



# أعالي مكة

Aali Makkah

الزاوية الاقتصادية



Location

Western Region –  
Makkah City

Use

Residential - Commercial

Development Functions

Studies – Designs - Development  
management

Size

974,198 m2

Classification

Private

Development type

Infrastructure





# تلال مكة Tilal Makkah

شرف الجوار



Location

Western Region –  
Makkah City

Use

Residential -  
Commercial

Development Functions

Studies – Designs - Development  
management

Size

946,979 m2

Classification

Private

Development type

Infrastructure





# الرجاب

## Al Rehab

رعاية الحياة

Location

Western Region –  
Makkah City

Use

Residential - Commercial

Development Functions

Studies – Designs - Development  
management – Implementation-  
Marketing

Size

1,070,198 m2

Classification

Private

Development type

Infrastructure



# صندوق مشارف العوالي

## Masharif Al Awali Fund

إطلالة الفخامة



Location

Western Region –  
Jeddah City

Use

Residential -  
Commercial

Development Functions

Development of infrastructure –  
marketing and selling

Size

1,220,392 m2

Classification

Real Estate Fund

Development type

Infrastructure



# صندوق رابية أجياد

Rabia Ajyad Fund

أسلوب الحياة المتحددة



Location

Western Region –  
Makkah City

Use

Residential - Commercial

Development Functions

Development management

Size

300,000 m2

Classification

Real Estate Fund

Development type

Infrastructure





# موارد لوجستيك

Mawared Logistic

مجمع الموارد

Location

Western Region –  
Makkah City

Use

Multi-purpose

Development Functions

Studies – Designs - Development  
management – Implementation –  
Marketing - Renting

Size

1,321,749 m2

Classification

Investment

Development type

Infrastructure





درة المباركية  
Durrat AlMubarakia

مشروع عمراني

Location

Northern Region –  
Arar City

Use

Residential - Commercial

Development Functions

Studies – Designs - Development  
management

Size

588,134 m2

Classification

Private

Development type

Infrastructure



# أرض الكورنيش

## Al Khobar Corniche

آفاق لقد واعد



Location

Eastern Region –  
Khobar City

Use

Residential -  
Commercial

Development Functions

Development management

Size

2,180,220 m2

Classification

Private

Development type

Infrastructure



# أرزان Arzan

—  
قلب الخبر النابض



Location

Eastern Region –  
Khobar City

Use

Residential

Development Functions

Studies – Designs - Development  
management – Marketing and sale

Size

92,493 m2

Classification

Private

Development type

Infrastructure





# اندسكوم Induscom

مستقبل التجارة والصناعة



Location

Eastern Region –  
Dammam City

Use

Industrial – Commercial – Storages  
– Workers' housing

Development Functions

Studies – Designs - Development  
management – Marketing and sale

Size

1,518,093 m2

Classification

Private

Development type

Superstructure



# الجودي AlJoudi

قلب حاضرة الدمام



Location

Eastern Region –  
Dammam City

Use

Residential - Commercial  
– Investment

Development Functions

Studies – Designs - Development  
management – Marketing and sale

Size

190,000 m2

Classification

Private

Development type

Infrastructure





روفان  
Rofan  
انعكاس الحياة

Location

Eastern Region –  
Dammam City

Use

Residential - Commercial  
– Investment

Development Functions

Studies – Designs - Development  
management – Marketing and sale

Size

455,250 m2

Classification

Private

Development type

Infrastructure



# سما الظهران

## Sama Dharan

المثلث الذهبي



Location

Eastern Region  
Al Dhahran City

Use

Residential -  
Commercial

Development Functions

Development management

Size

213,788 m2

Classification

Private

Development type

Infrastructure





حطين  
Hitteen

الخصوصية الراقية

Location  
Eastern Region  
Dammam City

Use  
Residential –  
Commercial

Development Functions  
Studies – Designs – Development  
management

Size  
300,000 m2

Classification  
Private

Development type  
Infrastructure





سحاب  
Sahab  
حياة راقية

Location

Eastern Region –  
Dammam City

Use

Residential -  
Commercial

Development Functions

Development management

Size

415,968 m2

Classification

Private

Development type

Infrastructure





# واحة الأعمال

## Business Oasis

قلب مركز التجارة والأعمال

Location

Eastern Region –  
Dammam City

Use

Business  
Commercial Center

Development Functions

Studies – Designs - Development  
management – Marketing and sale

Size

300,000 m2

Classification

Private

Development type

Infrastructure



# سمو أفينيو

## Sumou Avenue

واجهة مركز التجارة والأعمال



Location

Eastern Region –  
Dammam City

Use

Business  
Commercial Centre

Development Functions

Studies – Designs - Development  
management – Marketing and sale

Size

333,590 m2

Classification

Private

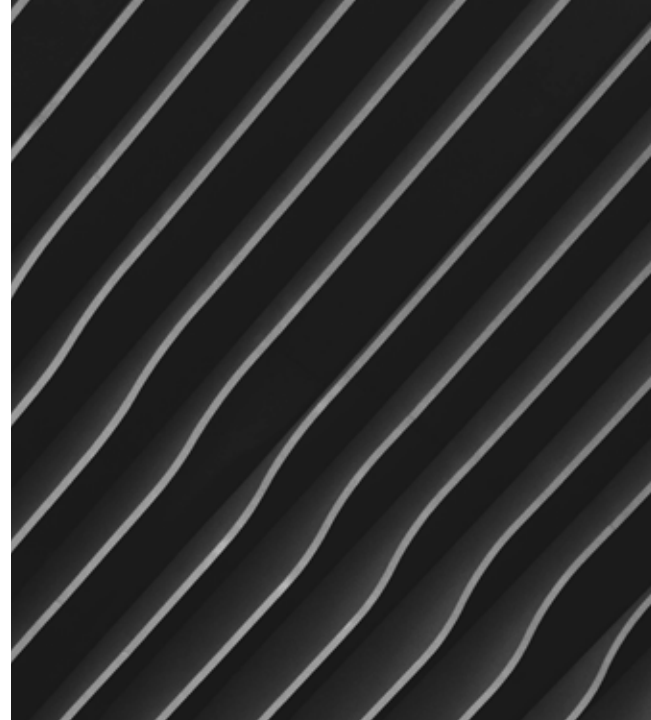
Development type

Infrastructure

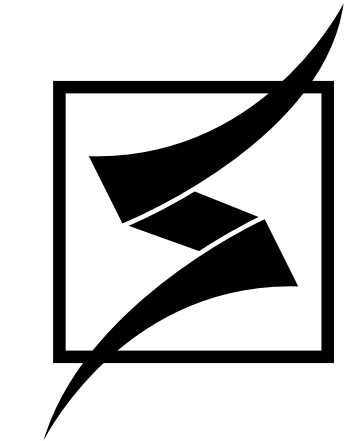




# A Source of Pride



Best Real Estate project Rofan  
Saudi Summit for construction and infrastructure summi



Best urban design for Dhaiat Sumou project  
Cityscape Jeddah

Middle East Excellence Award  
Activities of the Excellence Award Conference in Dubai



Best Real Estate project Induscom – Arabian Achievement event  
Arabian investment



World Federation of Business Award  
Qatar Business Awards



جائزة أفضل بيئة عمل لعام 2030

Best Real Estate Developer Award  
Egroup Conference for construction

Best Real Estate Development Company Award  
Naseba Annual Award



Top 100 Brands Award  
Homeland Award




Makkah Excellence Award

# Success Partners



# Accredited By





معاً نسمو  
Together We Evolve



920 028 029

[sumou.com.sa](http://sumou.com.sa)

[X](#) [@](#) [in](#) [▶](#) SumouRE